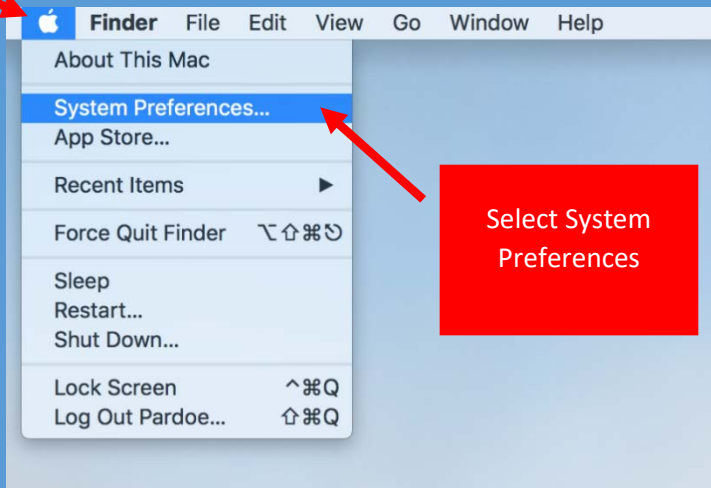


# Connecting to Wi-Fi Using Mac

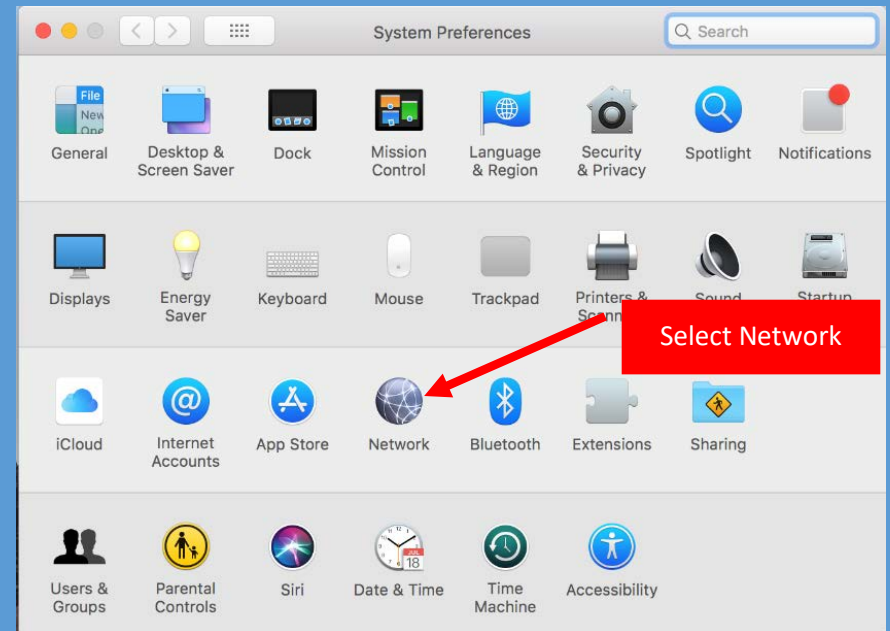
Click on the **Apple Icon**, select **System Preferences**

Click Apple Icon



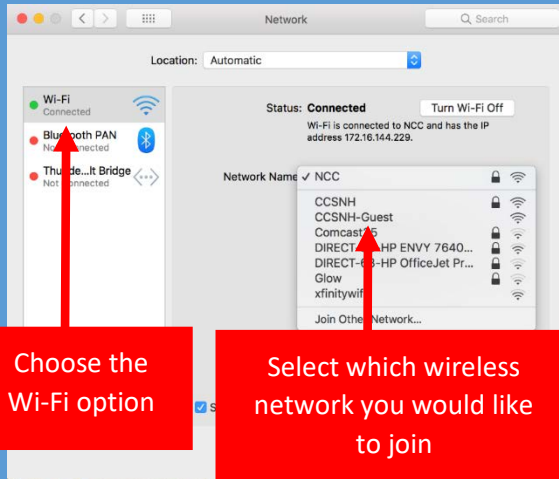
Select System Preferences

In the **System Preferences** window select **Network**



Select Network

Be sure to choose the **Wi-Fi** option on the left side of the screen



Choose the Wi-Fi option

Select which wireless network you would like to join

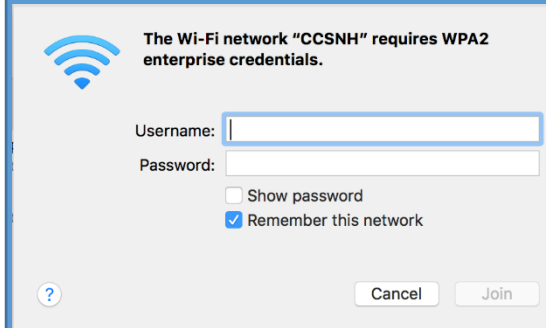
Click on the drop down menu next to **Network Name** and choose which wireless network you would like to connect to, either **CCSNH** or **CCSNH-Guest**.

CCSNH will be used for any individual who has a valid CCSNH e-mail account while CCSNH-Guest will be used for anyone who is visiting the campus or has not yet been assigned an e-mail address.

**Although NCC is still visible it will no longer be an active network**

Once you have chosen the correct network, you will be prompted to enter your username and password.

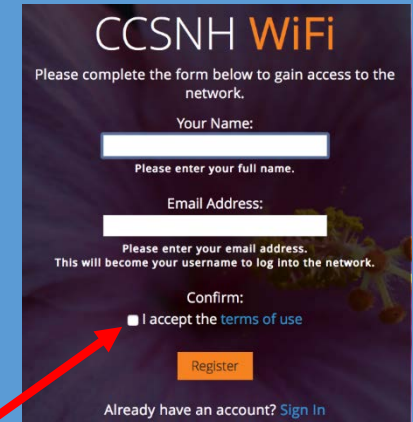
### CCSNH Network View



If logging into the **CCSNH Network** your username and password will be the same as your username and password for your CCSNH e-mail.

If you are choosing the **CCSNH-Guest** option you will be prompted to provide your full name and a current e-mail address. Be sure to read and accept the terms of use before selecting register.

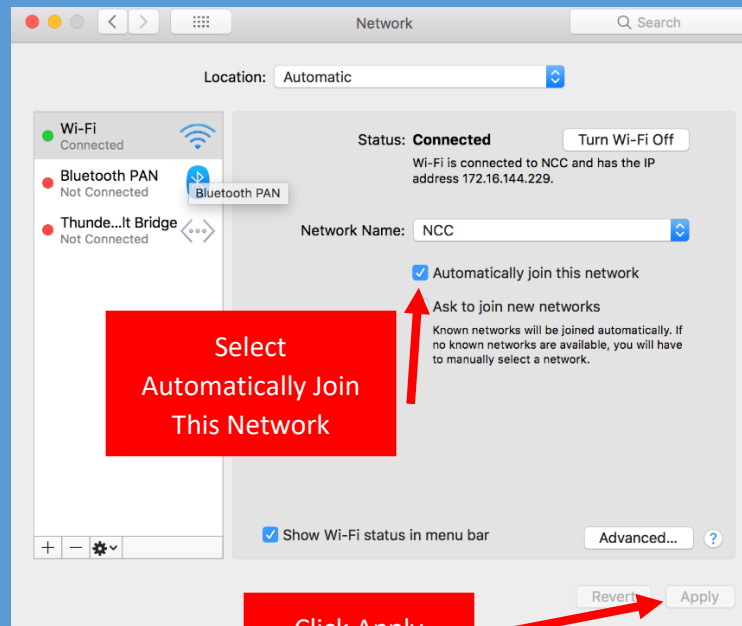
### CCSNH-Guest Network View



Read and accept the terms of use

Already have an account? [Sign In](#)

Please ensure that you have selected the **Automatically Join This Network** box, then click **Apply**



Select  
Automatically Join  
This Network

Click Apply

Once you are connected your Wi-Fi should remember your username and password for you automatically.